

Product technical sheet

WORKOUT 2329

vinci
play



14+



< 140 kg

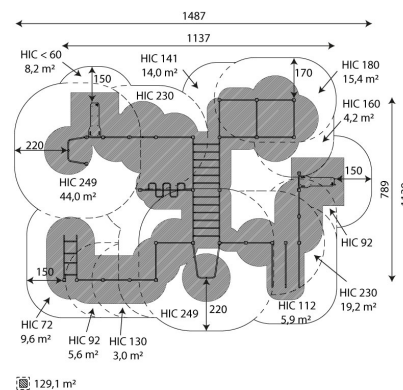
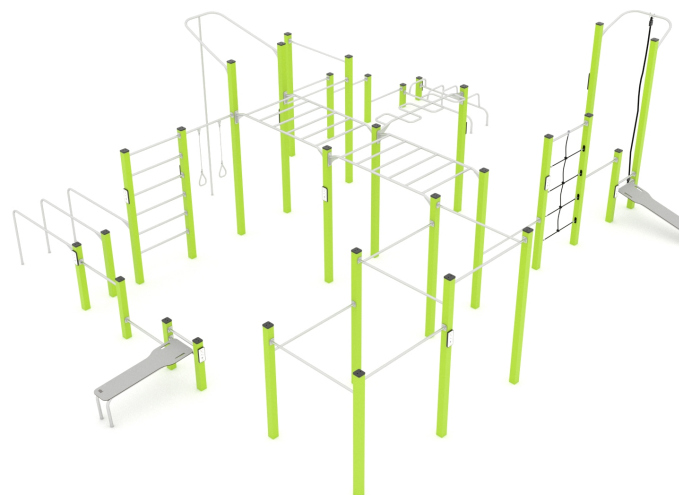


129,1 m2

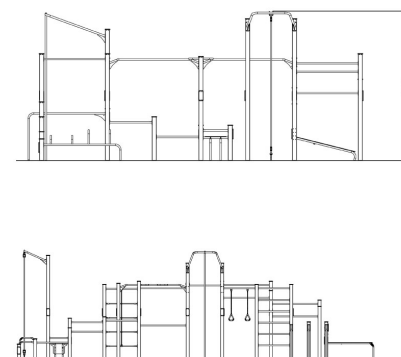
Product data

| | |
|--------------------------------|--------------|
| Length | 1137 cm |
| Width | 789 cm |
| Total height | 351 cm |
| Age group | 14+ years |
| Maximum weight of user | 140 kg |
| Safety zone | 129,1 m2 |
| Free fall height | 249 cm |
| In accordance with norm EN | 16630:2015 |
| Weight of the heaviest part | 38 kg |
| Dimensions of the largest part | 10x10x350 cm |
| Availability of spare parts | YES |
| Installation time | 10 h |
| Color options | |

Data is subject to change without prior notice.



129,1 m²



Vinci Group Sp. z o.o.
Seminaryjna 9 Street
99-400 Łowicz

VAT: 534-250-14-46
PHONE: +48 42 203 24 99 ext. 26
M: +48 793 404 991

workout

biuro@vinci-play.com
info@vinci-play.com
www.vinci-play.com

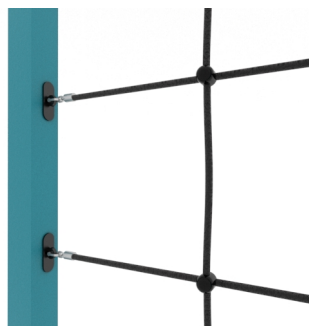
Material specification



Powder galvanized and powder coated or stainless steel construction of 100 x 100 mm profile,



Aluminum exercise instructions plate screwed to HDPE plate, resistant to weather conditions,



Steel ropes in polypropylene braid, connected with durable plastic elements, stainless steel or aluminum,



Steel rope in polypropylene braid,



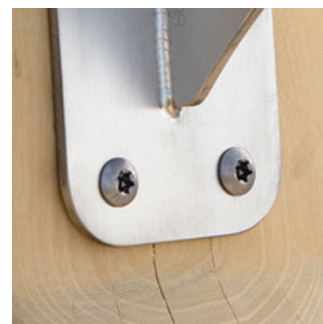
Seats/backrests made of durable HPL plate, resistant to weather conditions,



Stainless steel bars with a diameter of 38 mm for a comfortable grip during exercises.



Certified handles and calibrated chains made of stainless steel, preventing fingers from getting caught,



Stainless steel screws and/or screws covered with plastic caps,

Additional information

- device intended for public outdoor gyms;
- equipment has a certificate issued by an accredited entity or a declaration of conformity;
- no sharp edges or chinks that would pose a danger of jimmie the head, fingers or any other body parts;
- anchoring on flat surface, 100 cm deep;
- render is for reference only, the actual appearance of the equipment and its color may vary;

Guarantee

- 30** 30 year guarantee - Structural strength of steel and stainless steel components
- 15** 15 year guarantee - Structural failure of steel and stainless steel, for dynamic equipment
- 10** 10 year guarantee - Structural failure of high density polyethylene and high pressure laminates components
- 5** 5 year guarantee - Corrosion of stainless steel and hot dip galvanized and powder coated components; against bark beetles and rot in case of wooden structural elements

Detailed information in the guarantee card

Amount of safe surface corresponding with free fall height:

| | |
|---------|---------------------|
| HIC <60 | 8,2 m ² |
| HIC 72 | 9,6 m ² |
| HIC 92 | 5,6 m ² |
| HIC 112 | 5,9 m ² |
| HIC 130 | 3,0 m ² |
| HIC 141 | 14,0 m ² |
| HIC 160 | 4,2 m ² |
| HIC 180 | 15,4 m ² |
| HIC 230 | 19,2 m ² |
| HIC 249 | 44,0 m ² |

Data is subject to change without prior notice.

Surfaces according to EN 16630:2015

| | Description (mm) | Layer thickness (cm) | Maximum fall height (cm) |
|-------------------------------|--|----------------------|--------------------------|
| | Concrete / stone / bituminous surfaces (A, B, C) | - | ≤100 |
| | outer soil layer (A,B,C) | - | ≤120 |
| | Turf (A,B,C) | - | ≤150 |
| bark (A,C) | Particle size from 20 to 80 | 30 | ≤200 |
| | | 40 | ≤300 |
| wood shavings/cuttings (A, C) | Particle size from 5 to 30 | 30 | ≤200 |
| | | 40 | ≤300 |
| sand (A,C) | Particle size from 0,2 to 2 mm | 30 | ≤200 |
| | | 40 | ≤300 |
| gravel (A,C) | Particle size from 2 to 8 | 30 | ≤200 |
| | | 40 | ≤300 |
| attested synthetic (A, B, C) | Tested according to EN 1177 | | 249 |

